

Weekly Lodging Report - Performance Analysis - Week: 11/30/03 - 12/06/03

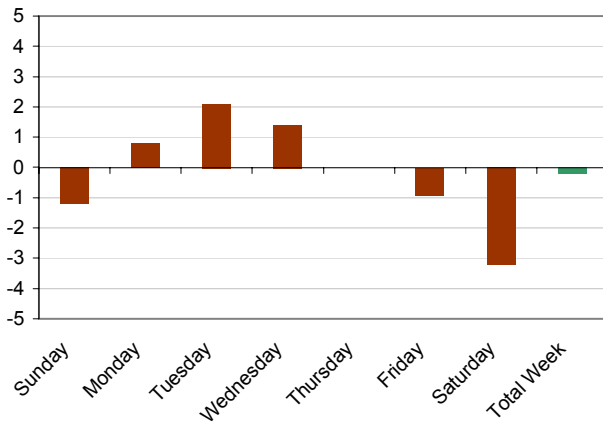


Segment	Sunday		Monday		Tuesday		Wednesday		Thursday		Friday		Saturday		Total Week	
	TY	LY	TY	LY	TY	LY	TY	LY	TY	LY	TY	LY	TY	LY	TY	LY
	11/30 2003	12/1 2002	12/1 2003	12/2 2002	12/2 2003	12/3 2002	12/3 2003	12/4 2002	12/4 2003	12/5 2002	12/5 2003	12/6 2002	12/6 2003	12/7 2002	Week 2003	Week 2002
United States	Occup	%Chg	Occup	%Chg	Occup	%Chg	Occup	%Chg	Occup	%Chg	Occup	%Chg	Occup	%Chg	Occup	%Chg
	34.2	-1.2	49.5	0.8	57.4	2.1	59.4	1.4	55.6	0.0	56.1	-0.9	57.7	-3.2	52.8	-0.2

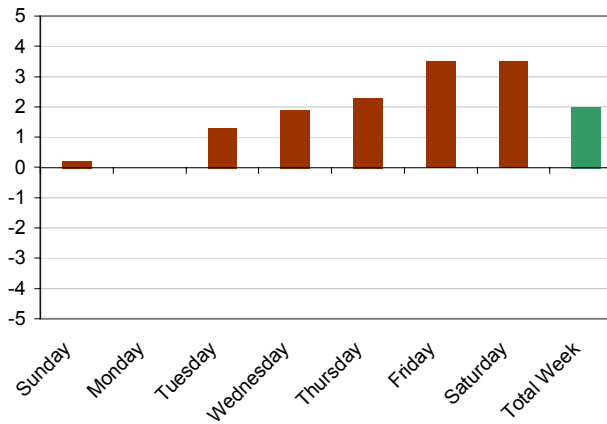
United States	ADR	%Chg	ADR	%Chg	ADR	%Chg	ADR	%Chg	ADR	%Chg	ADR	%Chg	ADR	%Chg	ADR	%Chg
	74.17	0.2	79.02	0.0	82.73	1.3	84.42	1.9	84.43	2.3	81.36	3.5	82.08	3.5	81.66	2.0

United States	RevPAR	%Chg	RevPAR	%Chg	RevPAR	%Chg	RevPAR	%Chg	RevPAR	%Chg	RevPAR	%Chg	RevPAR	%Chg	RevPAR	%Chg
	25.37	-0.9	39.14	0.9	47.47	3.4	50.15	3.3	46.93	2.4	45.63	2.6	47.39	0.4	43.16	1.9

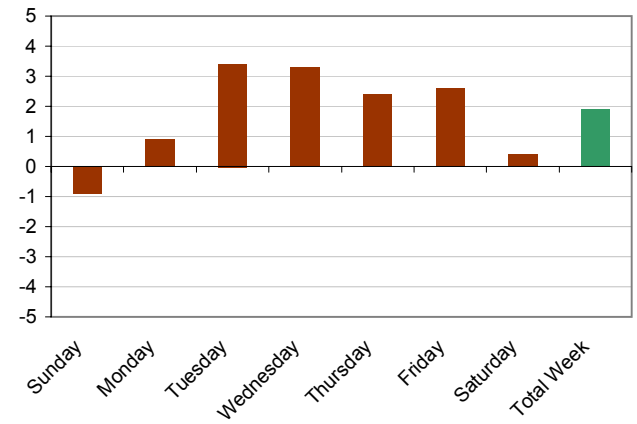
Occupancy Variance (%) - This Year vs. Last Year



ADR Variance (%) - This Year vs. Last Year



RevPAR Variance (%) - This Year vs. Last Year



Source: Smith Travel Research