

Weekly Lodging Report - Performance Analysis - Week: 12/07/03 - 12/13/03

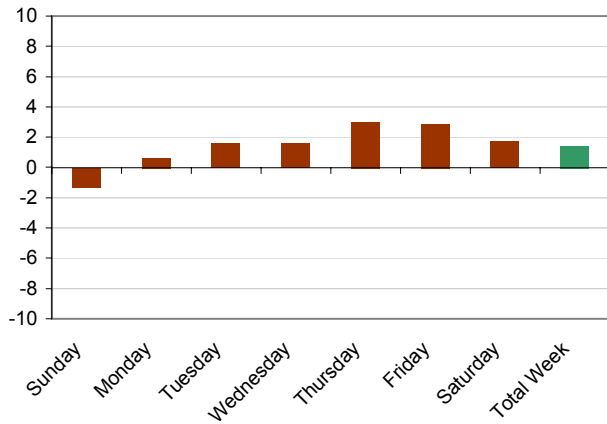


Segment	Sunday		Monday		Tuesday		Wednesday		Thursday		Friday		Saturday		Total Week	
	TY	LY	TY	LY	TY	LY	TY	LY	TY	LY	TY	LY	TY	LY	TY	LY
	12/7 2003	12/8 2002	12/8 2003	12/9 2002	12/9 2003	12/10 2002	12/10 2003	12/11 2002	12/11 2003	12/12 2002	12/12 2003	12/13 2002	12/13 2003	12/14 2002	Week 2003	Week 2002
United States	Occup	%Chg	Occup	%Chg	Occup	%Chg	Occup	%Chg	Occup	%Chg	Occup	%Chg	Occup	%Chg	Occup	%Chg
	39.3	-1.3	54.0	0.6	58.7	1.6	57.4	1.6	51.3	3.0	50.2	2.9	52.7	1.7	51.9	1.4

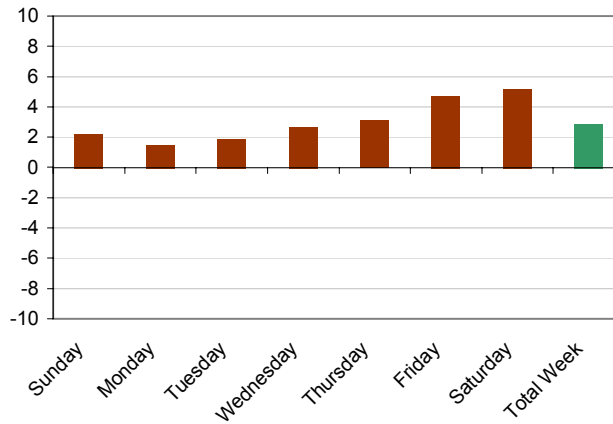
Segment	ADR	%Chg	ADR	%Chg	ADR	%Chg	ADR	%Chg	ADR	%Chg	ADR	%Chg	ADR	%Chg	ADR	%Chg
United States	82.02	2.2	83.63	1.5	83.35	1.9	83.06	2.7	81.22	3.1	77.28	4.7	78.39	5.2	81.35	2.9

Segment	RevPAR	%Chg	RevPAR	%Chg	RevPAR	%Chg	RevPAR	%Chg	RevPAR	%Chg	RevPAR	%Chg	RevPAR	%Chg	RevPAR	%Chg
United States	32.27	1.0	45.19	2.0	48.90	3.4	47.64	4.3	41.65	6.2	38.80	7.8	41.30	7.2	42.25	4.5

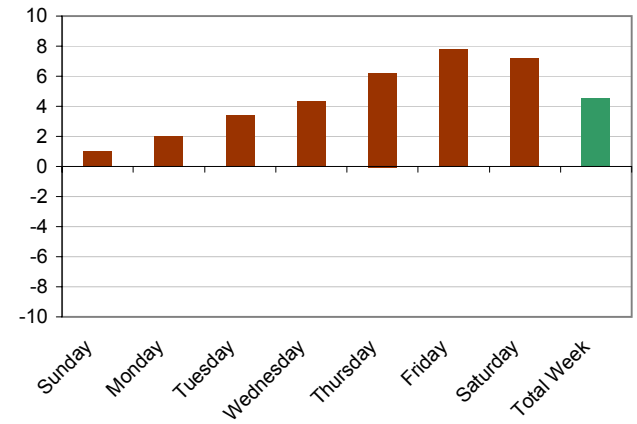
Occupancy Variance (%) - This Year vs. Last Year



ADR Variance (%) - This Year vs. Last Year



RevPAR Variance (%) - This Year vs. Last Year



Source: Smith Travel Research