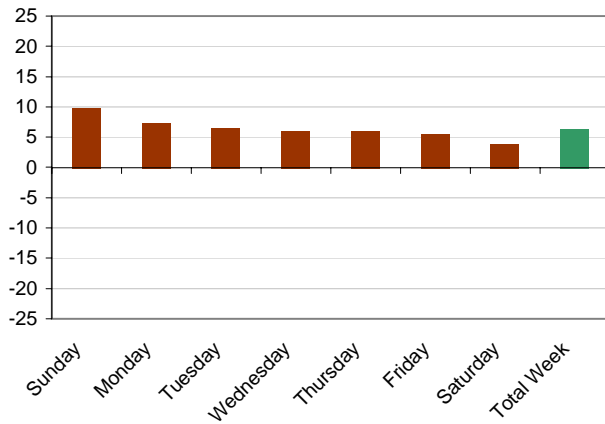


Weekly Lodging Report - Performance Analysis - Week: 11/13/05 - 11/19/05

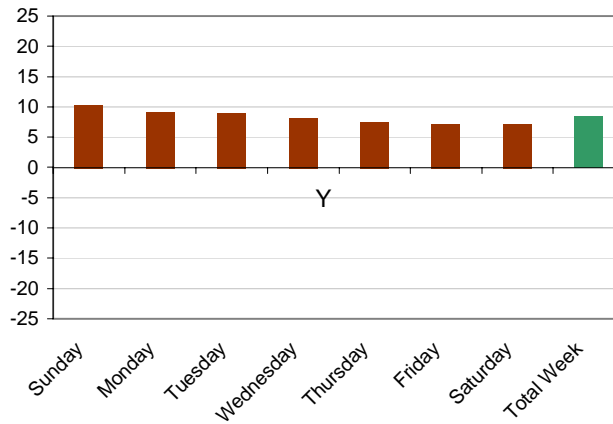


Segment	Sunday		Monday		Tuesday		Wednesday		Thursday		Friday		Saturday		Total Week	
	TY	LY	TY	LY	TY	LY	TY	LY	TY	LY	TY	LY	TY	LY	TY	LY
	11/13 2005	11/14 2004	11/14 2005	11/15 2004	11/15 2005	11/16 2004	11/16 2005	11/17 2004	11/17 2005	11/18 2004	11/18 2005	11/19 2004	11/19 2005	11/20 2004	Week 2005	Week 2004
United States	Occup	%Chg	Occup	%Chg	Occup	%Chg	Occup	%Chg	Occup	%Chg	Occup	%Chg	Occup	%Chg	Occup	%Chg
	50.1	9.9	66.2	7.3	71.8	6.5	71.8	6.1	65.9	6.1	64.7	5.5	64.5	3.9	65.0	6.4
	ADR	%Chg	ADR	%Chg	ADR	%Chg	ADR	%Chg	ADR	%Chg	ADR	%Chg	ADR	%Chg	ADR	%Chg
United States	94.83	10.3	96.64	9.1	96.72	9.0	95.97	8.2	93.88	7.5	88.03	7.2	88.49	7.1	93.57	8.4
	RevPAR	%Chg	RevPAR	%Chg	RevPAR	%Chg	RevPAR	%Chg	RevPAR	%Chg	RevPAR	%Chg	RevPAR	%Chg	RevPAR	%Chg
United States	47.47	21.1	63.95	17.0	69.48	16.1	68.88	14.7	61.83	14.1	56.98	13.1	57.12	11.3	60.82	15.2

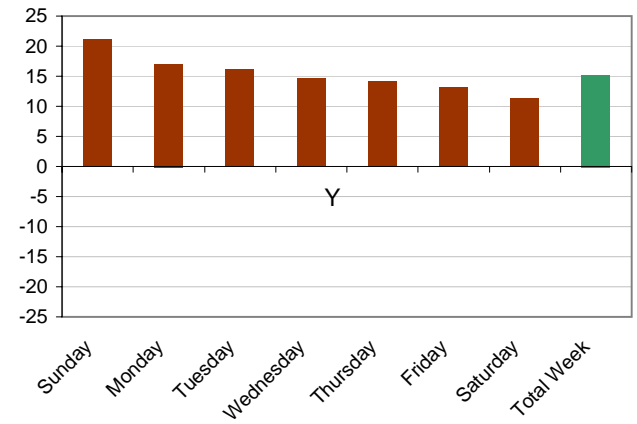
Occupancy Variance (%) - This Year vs. Last Year



ADR Variance (%) - This Year vs. Last Year



RevPAR Variance (%) - This Year vs. Last Year



Source: Smith Travel Research