

## Weekly Lodging Report - Performance Analysis - Week: 12/18/05 - 12/24/05

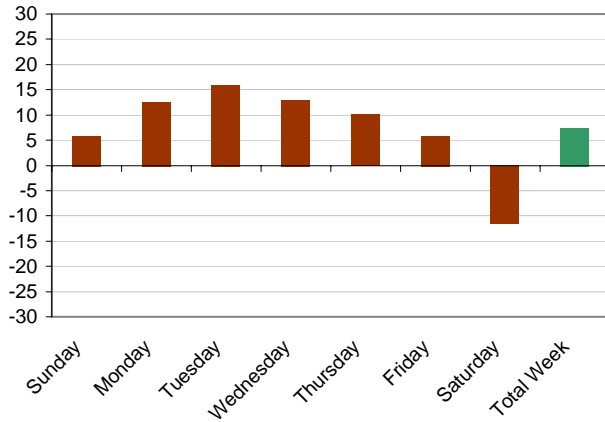


Segment	Sunday		Monday		Tuesday		Wednesday		Thursday		Friday		Saturday		Total Week	
	TY	LY	TY	LY	TY	LY	TY	LY	TY	LY	TY	LY	TY	LY	TY	LY
	12/18	12/19	12/19	12/20	12/20	12/21	12/21	12/22	12/22	12/23	12/23	12/24	12/24	12/25	Week	Week
	2005	2004	2005	2004	2005	2004	2005	2004	2005	2004	2005	2004	2005	2004	2005	2004
	Occup	%Chg	Occup	%Chg	Occup	%Chg	Occup	%Chg	Occup	%Chg	Occup	%Chg	Occup	%Chg	Occup	%Chg
<b>United States</b>	36.7	5.8	44.8	12.6	44.4	15.9	40.9	13.0	37.0	10.1	36.3	5.8	35.5	-11.5	39.4	7.4

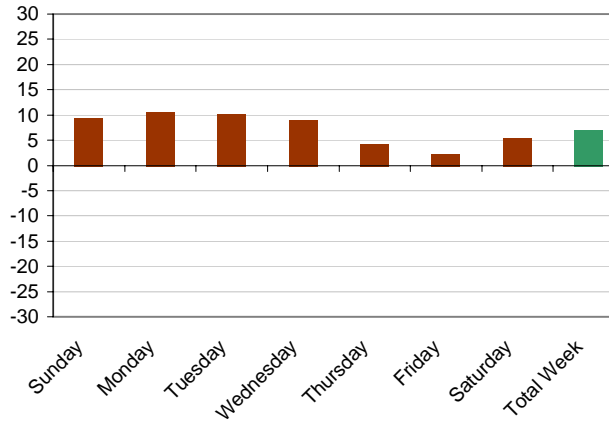
United States	ADR	%Chg	ADR	%Chg	ADR	%Chg	ADR	%Chg	ADR	%Chg	ADR	%Chg	ADR	%Chg	ADR	%Chg
	82.67	9.5	83.18	10.6	81.60	10.2	79.11	9.1	78.45	4.2	82.42	2.3	86.36	5.5	81.93	7.1

United States	RevPAR	%Chg	RevPAR	%Chg	RevPAR	%Chg	RevPAR	%Chg	RevPAR	%Chg	RevPAR	%Chg	RevPAR	%Chg	RevPAR	%Chg
	30.36	15.9	37.27	24.6	36.25	27.7	32.37	23.4	29.03	14.7	29.91	8.3	30.66	-6.7	32.26	14.9

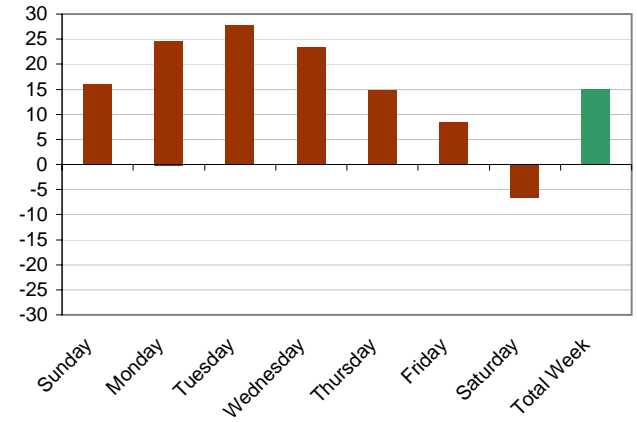
**Occupancy Variance (%) - This Year vs. Last Year**



**ADR Variance (%) - This Year vs. Last Year**



**RevPAR Variance (%) - This Year vs. Last Year**



Source: Smith Travel Research